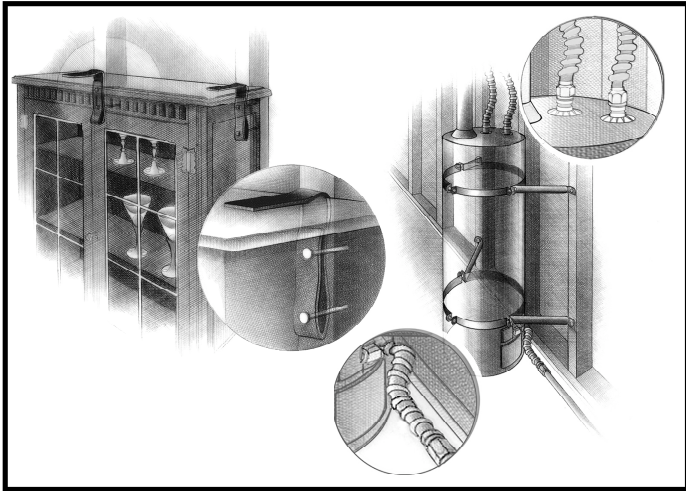




FOCUS

Secure It Now!



Identify Potential Hazards in Your Home and Begin to Fix Them

Earthquake safety is more than minimizing damage to buildings. We must also secure the contents of our buildings to reduce the risk to our lives and our pocketbooks.

Four people died in the Northridge earthquake because of unsecured building contents such as toppling bookcases. Many billions of dollars were lost due to this type of damage.

You should secure anything 1) heavy enough to hurt you if it falls on you, or 2) fragile and/or expensive enough to be a

significant loss if it falls. In addition to contents within your living space, also secure items in other areas, such as your garage, to reduce damage to vehicles or hazardous material spills.

There may be simple actions you can do right now that will protect you if an earthquake happens tomorrow. **START NOW** by moving furniture such as bookcases away from beds, sofas, or other places where people sit or sleep. Move heavy objects to lower shelves. Then begin to look for other items in your home that may be hazardous in an earthquake.

Some of the actions recommended on the reverse side of this Focus Sheet may take a bit longer to complete, but all are relatively simple. Most hardware stores and home centers now carry earthquake safety straps, fasteners, and adhesives.

Check these websites

www.earthquakecountry.info/roots (Earthquake Country Alliance/Southern California Earthquake Center)

www.espfocus.org (Emergency Survival Program)

www.oes.ca.gov (California Governor's Office of Emergency Services)

www.redcross.org (American Red Cross)

Follow the seven steps to earthquake safety from Putting Down Roots in Earthquake County - www.earthquakecountry.info/roots.

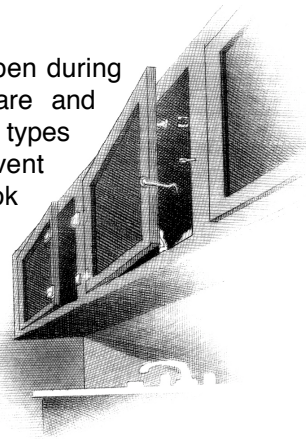
BEFORE: -----DURING:-----AFTER:-----

- #1**
Identify and fix hazards in your home.
- #2**
Create a disaster plan.
- #3**
Create disaster supplies kits.
- #4**
Identify and fix your building's weaknesses.
- #5**
Drop, cover and hold on.
- #6**
Check for injuries and damage.
- #7**
When safe, continue to follow your disaster plan.

F E B R U A R Y

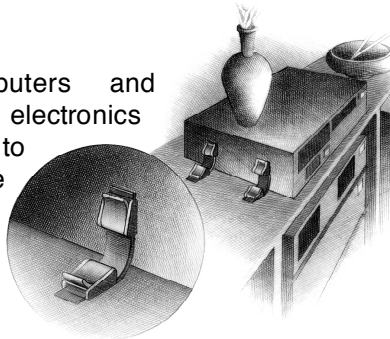
In the Kitchen

Unsecured cabinet doors fly open during earthquakes, allowing glassware and china to crash to the floor. Many types of latches are available to prevent this – child-proof latches, hook and eye latches or positive catch latches designed for boats. Gas appliances should have flexible connectors to reduce the risk of fire. Secure refrigerators and other major appliances to walls using earthquake appliance straps.



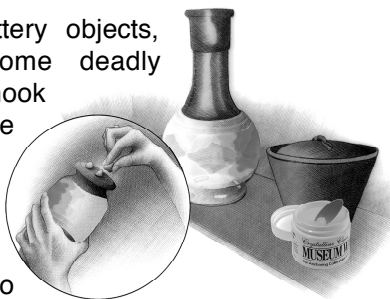
Electronics

TVs, stereos, computers and microwaves and other electronics are heavy and costly to replace. They can be secured with flexible nylon straps and buckles for easy removal and relocation.



Objects on Shelves and Tabletops

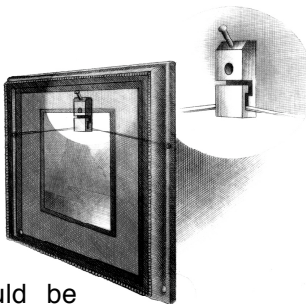
Collectibles, china, pottery objects, and lamps can become deadly projectiles. Use either hook and loop fasteners on the table and object, or non-damaging adhesives such as earthquake putty, clear quake gel, or microcrystalline wax to secure breakables in place.



Place heavy items and breakables on lower shelves.

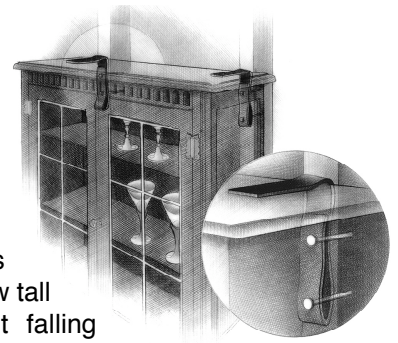
Hanging Objects

Mirrors, framed pictures, and other objects should be hung from closed hooks so that they can't bounce off the walls. Pictures and mirrors can also be secured at their corners with earthquake putty. Only soft art such as tapestries should be placed over beds or sofas.



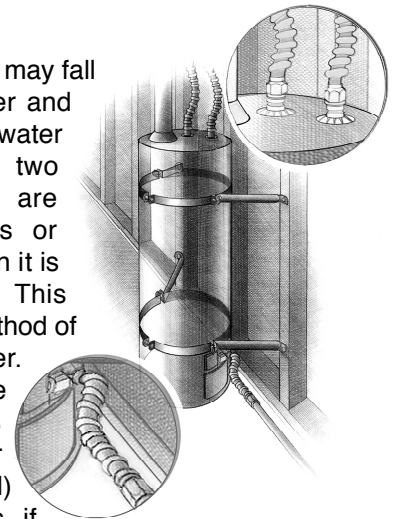
Furniture

Secure the tops of all top-heavy furniture, such as bookcases and file cabinets, to a wall. Be sure to anchor to the stud, and not just to the drywall. Flexible fasteners such as nylon straps allow tall objects to sway without falling over, reducing the strain on the studs. Loose shelving can also be secured by applying earthquake putty on each corner bracket.



Water Heater

Unsecured water heaters may fall over, rupturing rigid water and gas connections. If your water heater does not have two straps around it that are screwed into the studs or masonry of the wall, then it is not properly braced. This illustration shows one method of bracing a water heater. Bracing kits are available that make this process simple. Have a plumber install flexible (corrugated) copper water connectors, if not already done.



Adapted from Putting Down Roots in Earthquake Country, published by the Southern California Earthquake Center and available online at www.earthquakecountry.info/roots.

CELEBRATING 20 YEARS • 1989-2009
"TOW THE PREPAREDNESS LINE IN 2009"



EMERGENCY SURVIVAL PROGRAM
www.espfocus.org

This focus sheet is produced as part of the Emergency Survival Program (ESP). ESP is an awareness campaign designed to increase home, neighborhood, business and school emergency preparedness. ESP was developed by the County of Los Angeles. The California Governor's Office of Emergency Services (OES) and representatives from

Contra Costa, Imperial, Inyo, Kern, Los Angeles, Marin, Mono, Orange, Riverside, San Bernardino, San Diego, San Luis Obispo, Santa Barbara, Santa Cruz, and Ventura counties; Southern California Edison; the Southern California Earthquake Center and the American Red Cross assist in the development of campaign materials and coordination of the campaign.